

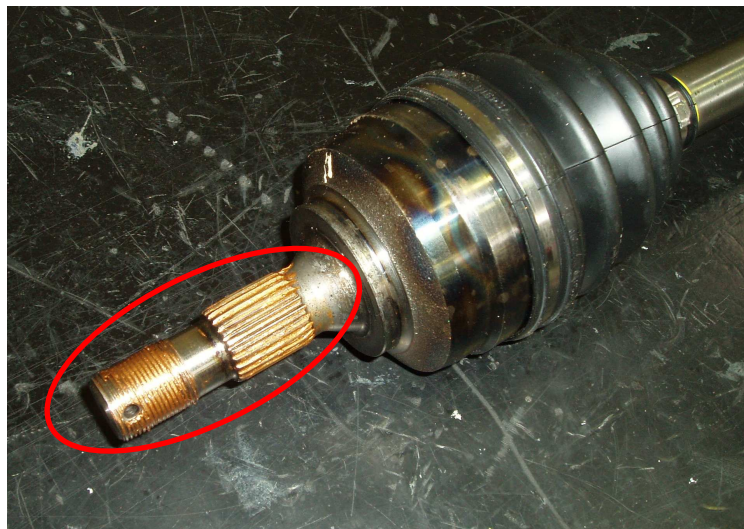
**INFO-TECH** CITROËN Racing C2 R2 and C2 R2 MAX N° 33/11.

**Subject:** Driveshaft's tightening.

Dear Customers,

Following an evolution of the driveshaft's tightening nut (reference BCSP 329733) coating at the beginning of this year, please find below our new recommendations for the fitting of your C2 R2Max driveshafts.

- Apply some copper grease on the threads and the grooves (wheel side only) of the driveshafts



- Tighten the driveshaft's nut using a torque wrench in good conditions, checked and inspected.

**Tightening torque: 215 Nm.**

Thank you for your attention.